

ENVISION CAMBRIDGE

Advisory Committee Meeting #11



Agenda

Existing conditions (20 mins)

Open space goals (10 mins)

Draft recommendations to citywide open space network (30 mins)

Discussion (40 mins)

Next steps (10 mins)

Recent studies and proposals

Cambridge:

- Healthy Parks and Playgrounds Task Force Report, 2009
- Green Ribbon Commission Report, Cambridge CDD, 2000
- Open Space and Recreation Plan, City of Cambridge, 2009-2016
- Cambridge Riverfront Plan, Cambridge CDD, 2011
- Cambridge Bicycle Plan, Cambridge CDD, 2015
- Connect Kendall Square Framework Plan, RBA, 2015
- Cambridge Open Space surveys

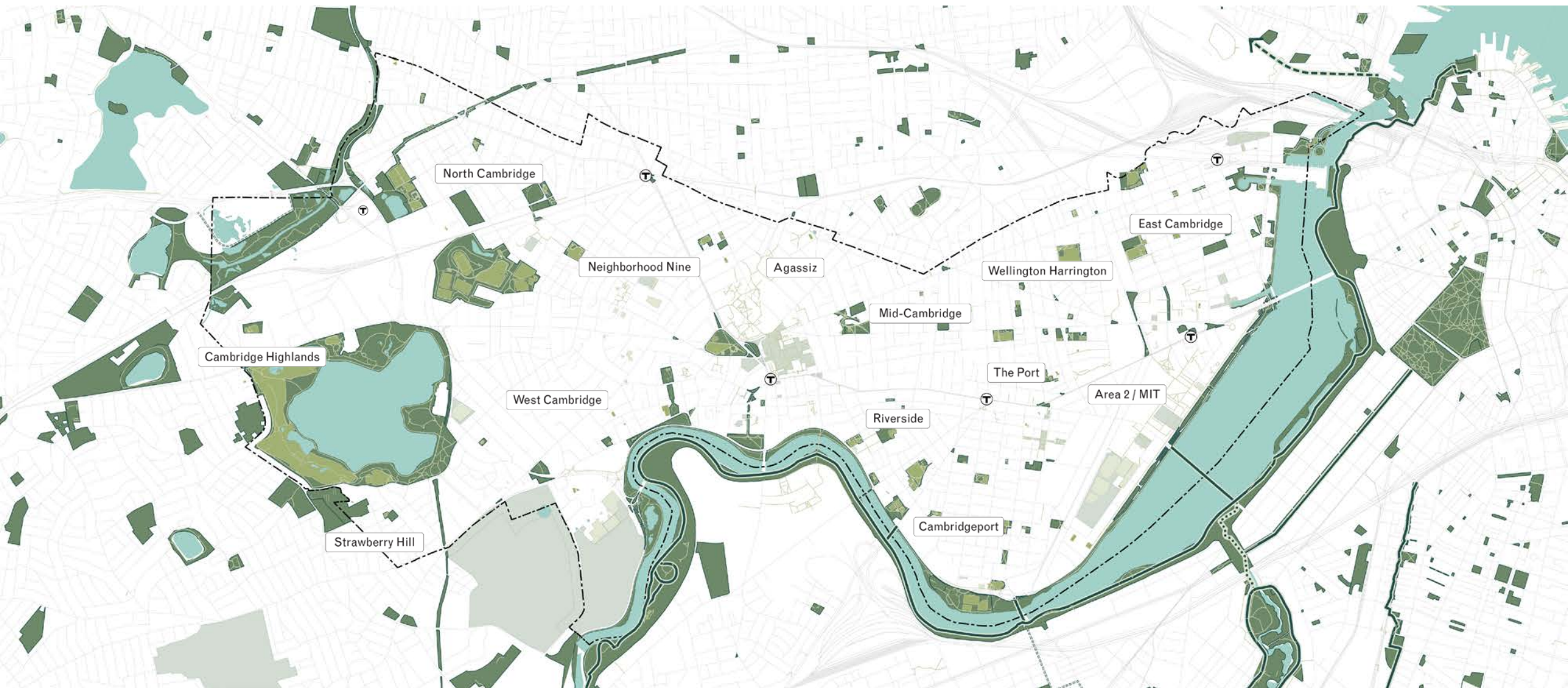
Regional:

- Emerald Network, Livable Streets Alliance, ongoing
- Malden River Greenway, Mystic River Watershed Association, 2017
- GreenLinks Boston, Boston Transportation Department, 2015
- LandLine, MAPC, ongoing
- East Coast Greenway, East Coast Greenway Alliance, 1991

Citywide open space



Citywide public open space



Existing Bicycle Level of Comfort (BLC 1 and BLC 2 routes)



Figure 5.6: Bicycle Level of Comfort Analysis: BLC 1 & BLC 2

- BLC 1 routes:**
Places where only people on bicycles or foot are allowed, like off-street paths or separated bicycle facilities; quiet neighborhood streets with only occasional vehicular traffic travelling at low speeds.
- BLC 2 routes:**
Neighborhood streets with some traffic, not travelling too fast; bike lanes against the curb; wide bike lanes on streets without much traffic that make travel predictable for people in cars and on bikes.

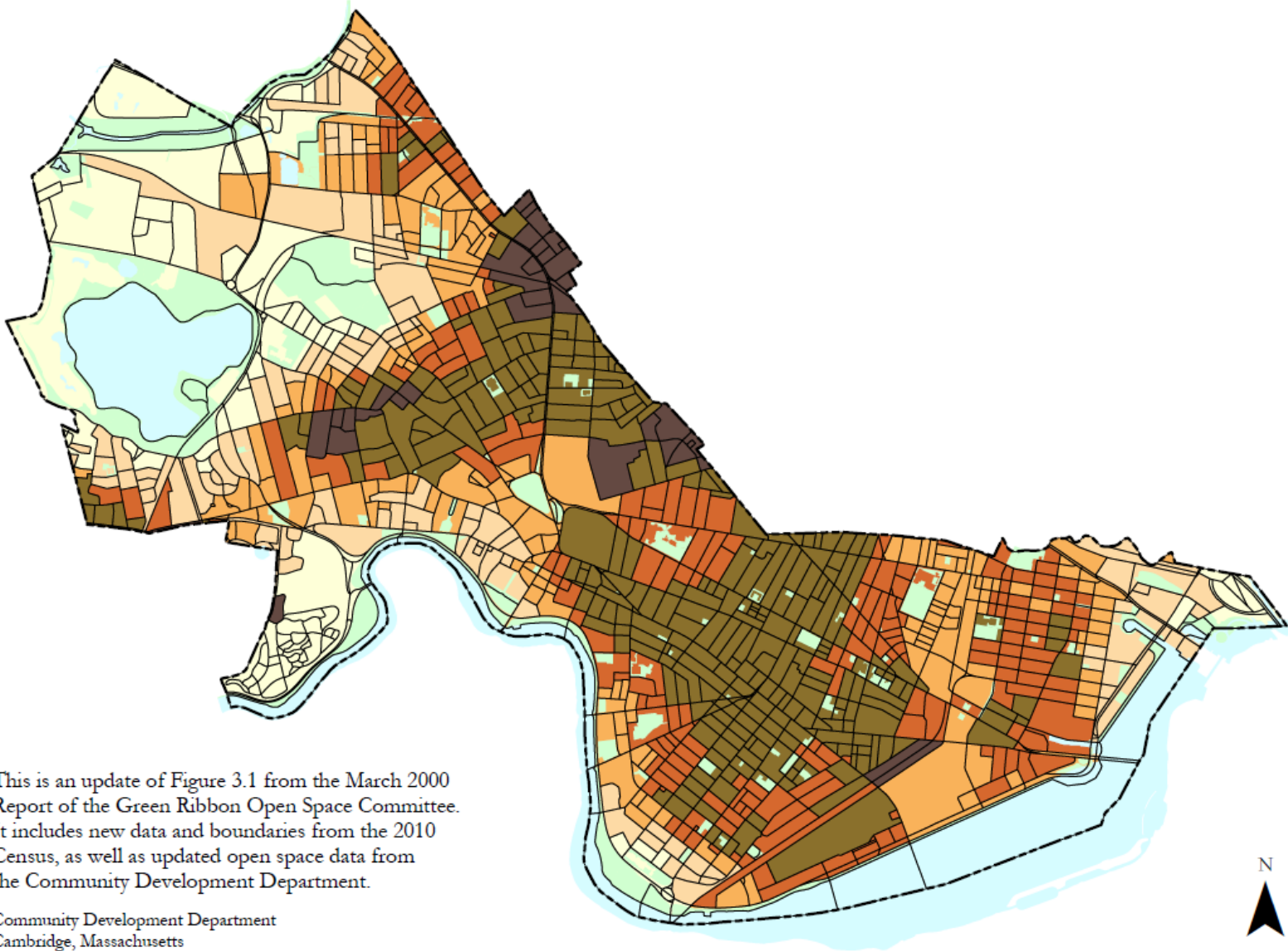
Source: City of Cambridge Bicycle Vision Plan, 2015.

Bike Vision Plan



Source: City of Cambridge Bicycle Vision Plan, 2015.

Areas underserved by open space



Acres of public open space per 1000 persons

- 0
- 0 – 1
- 1 – 2
- 2 – 4
- 4 – 10
- 10 and up

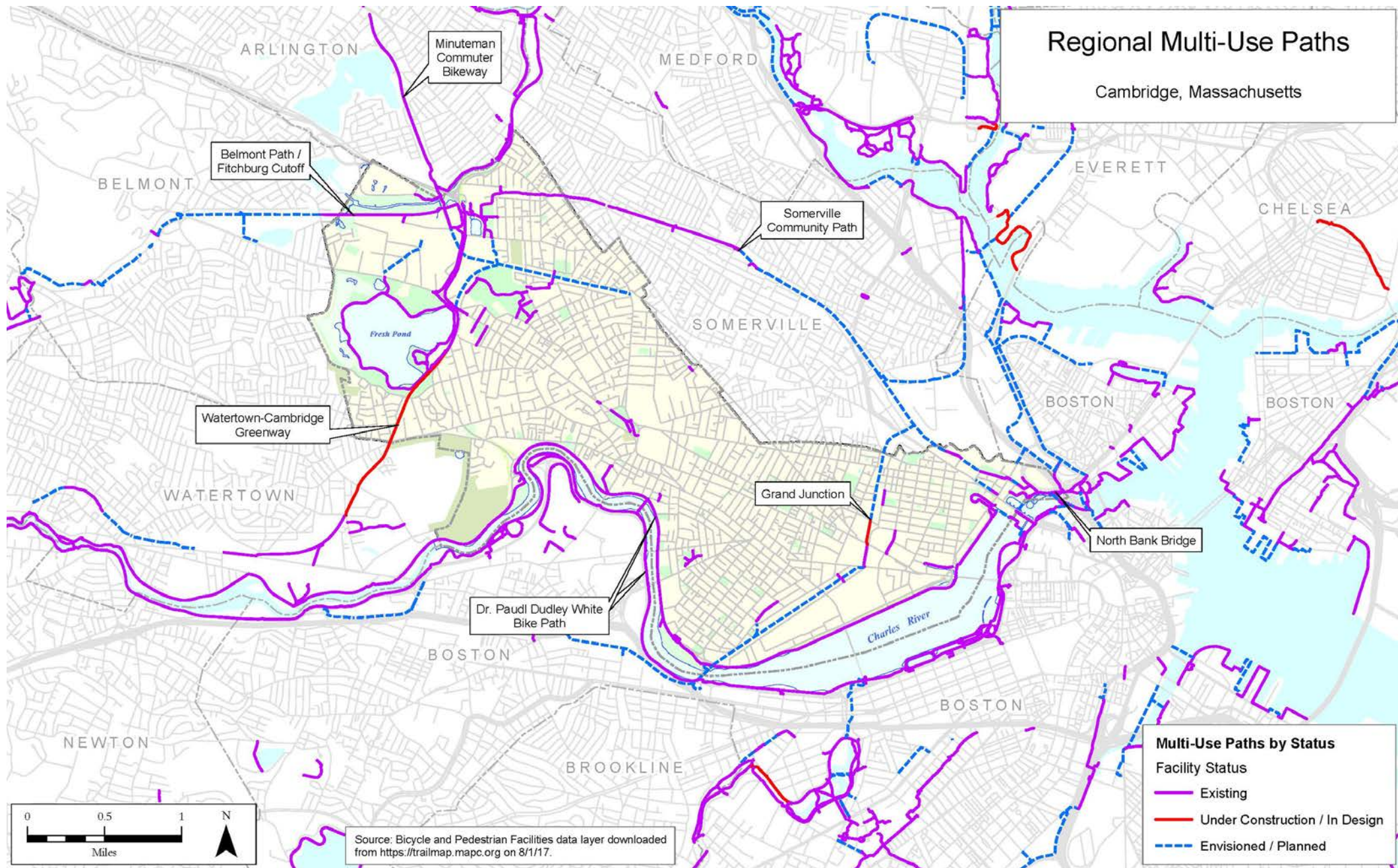
This is an update of Figure 3.1 from the March 2000 Report of the Green Ribbon Open Space Committee. It includes new data and boundaries from the 2010 Census, as well as updated open space data from the Community Development Department.

Community Development Department
Cambridge, Massachusetts

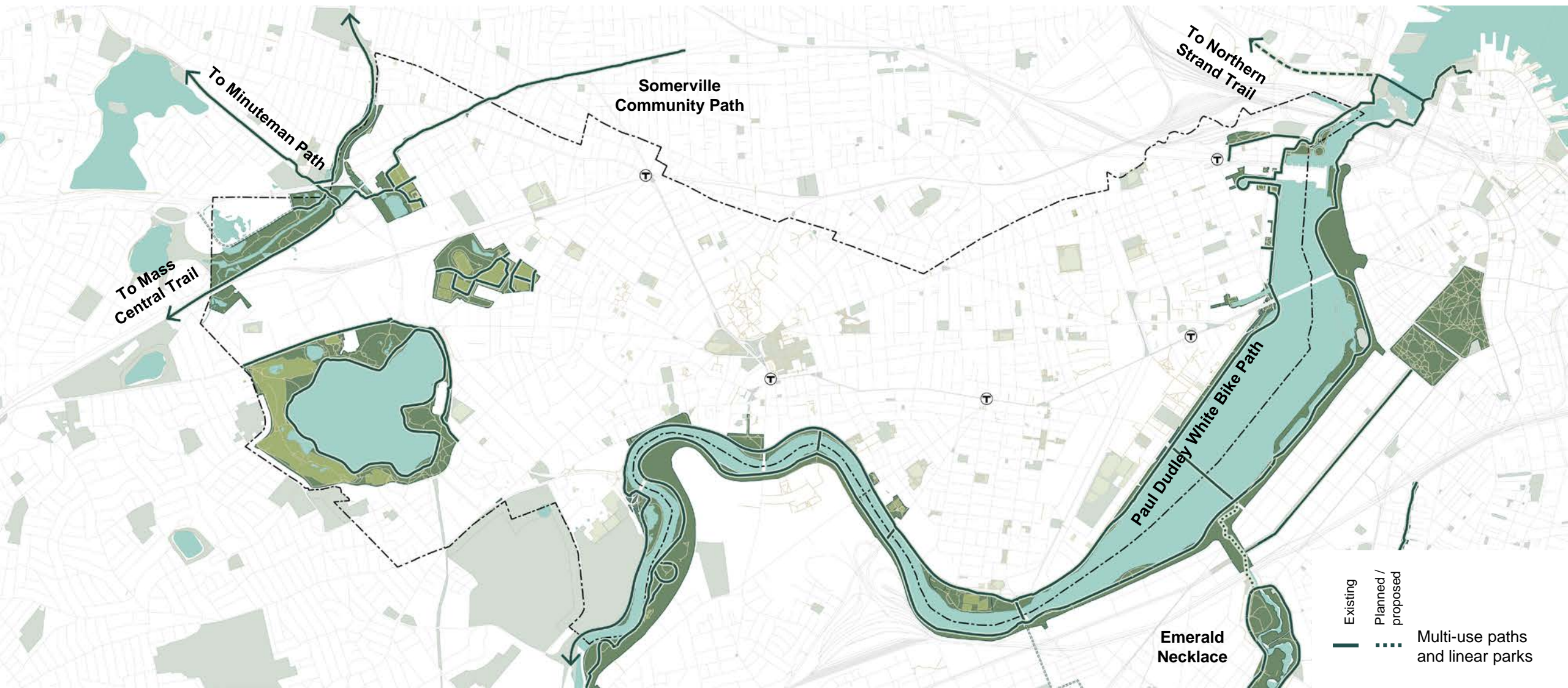
Source: Green Ribbon Commission Report, 2000.

Draft Goals

- Connect all residents and workers to significant open space resources including Danehy Park, Fresh Pond, Alewife Reservation, and the Charles River.
- Create safe walking and biking connections from Cambridge's neighborhoods to open spaces.
- Improve comfort and wayfinding on biking and walking routes along existing parts of the open space network.
- Create connections to integrate Alewife Square into the citywide open space network.
- Prioritize the planning and implementation of routes connecting citywide open spaces to regional paths and trails.



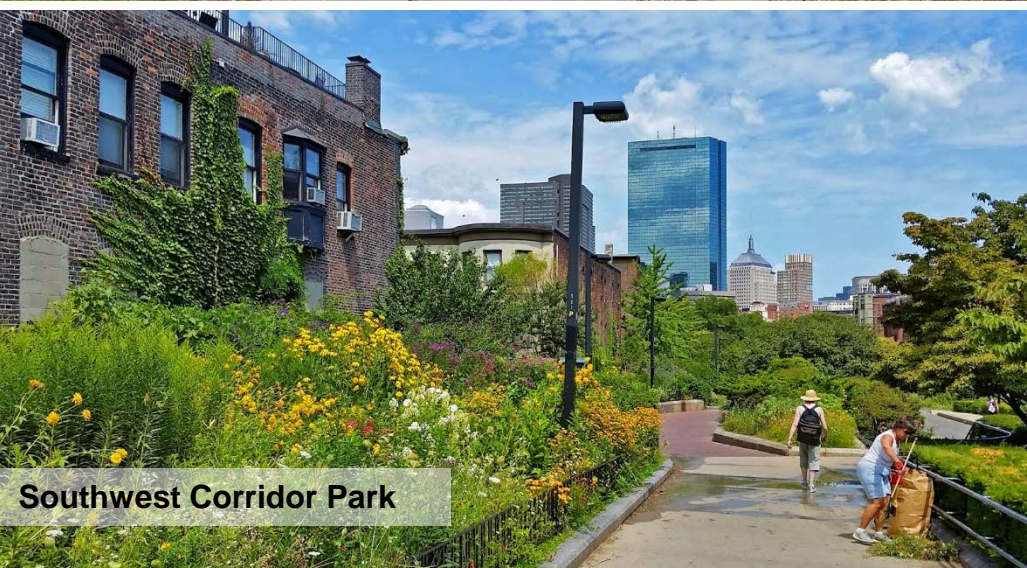
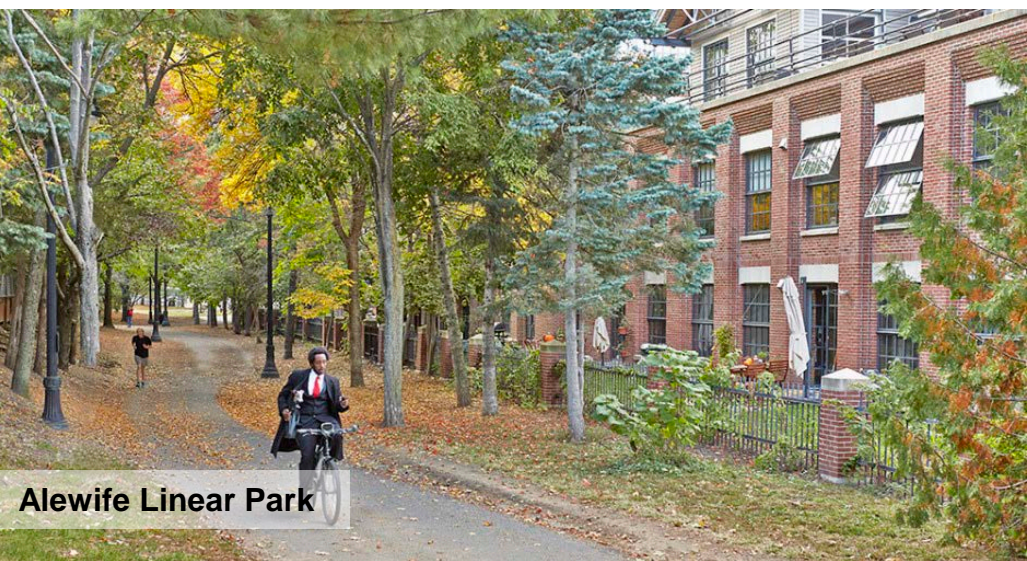
Cambridge's open space circuit – Existing but incomplete



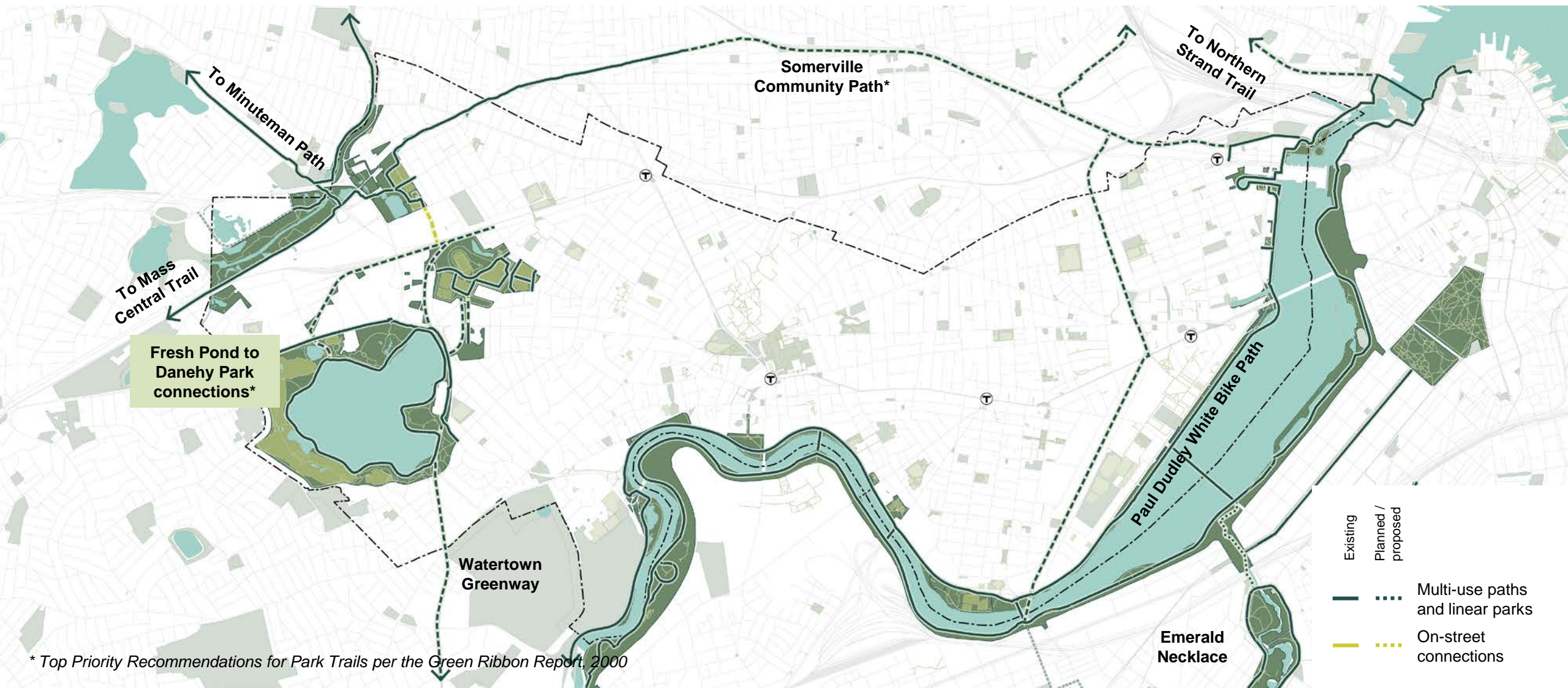
Alewife proposed open space



Alewife proposed open space

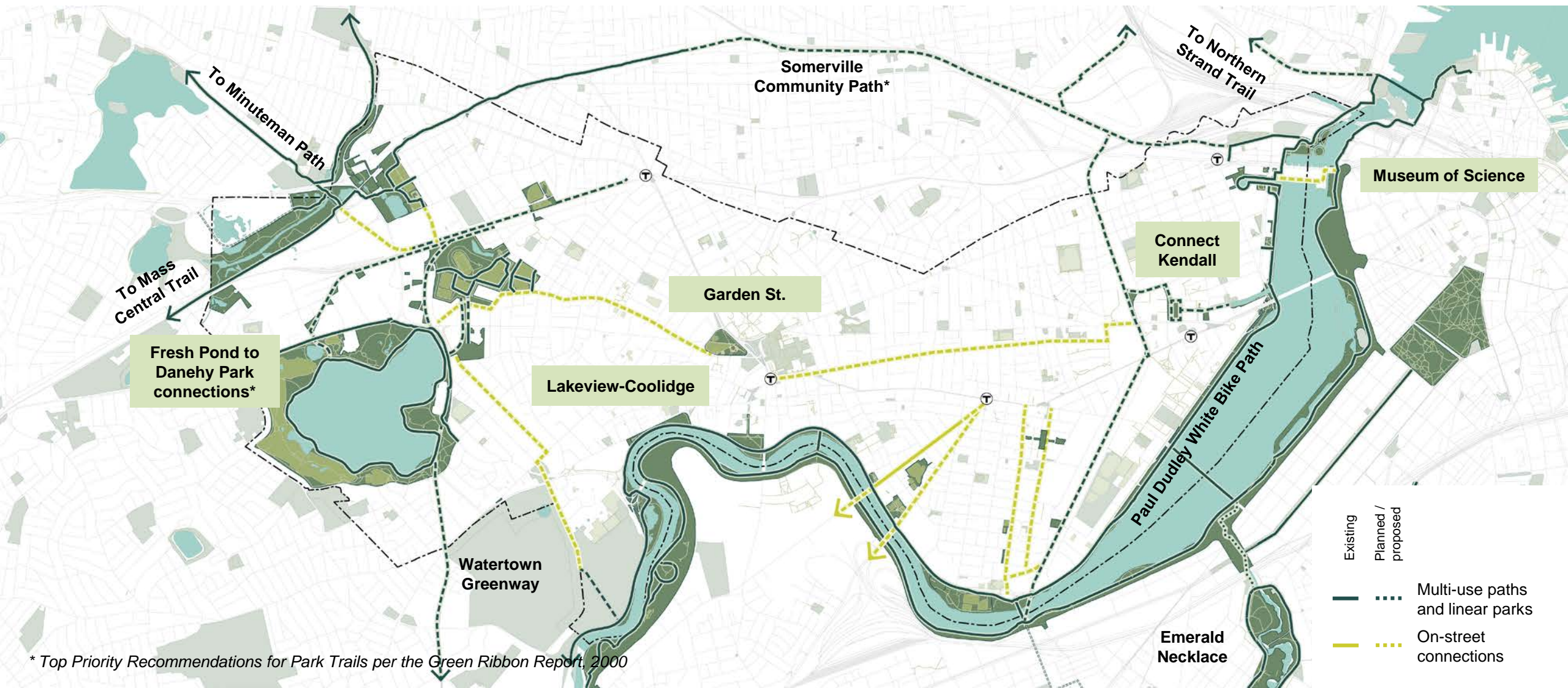


Cambridge's open space circuit – Planned and proposed links

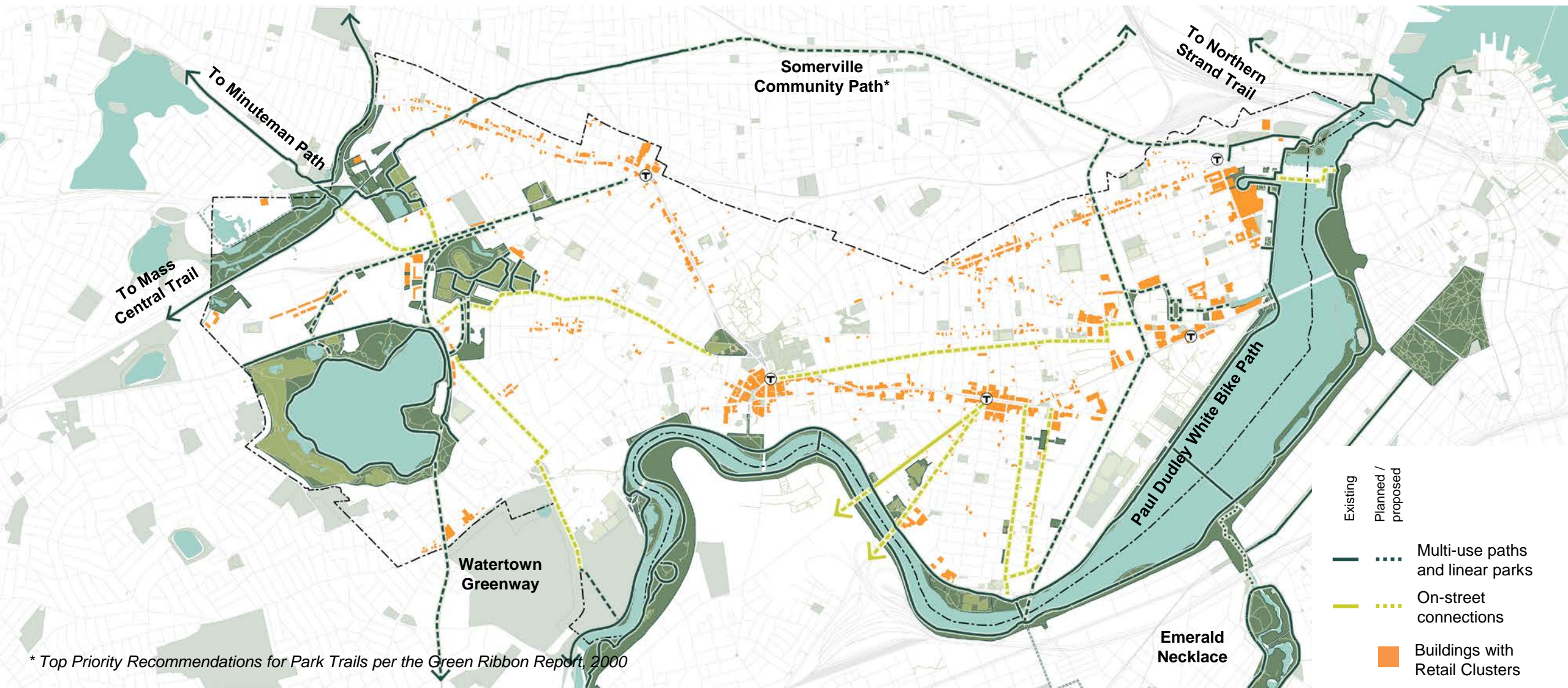


* Top Priority Recommendations for Park Trails per the Green Ribbon Report, 2000

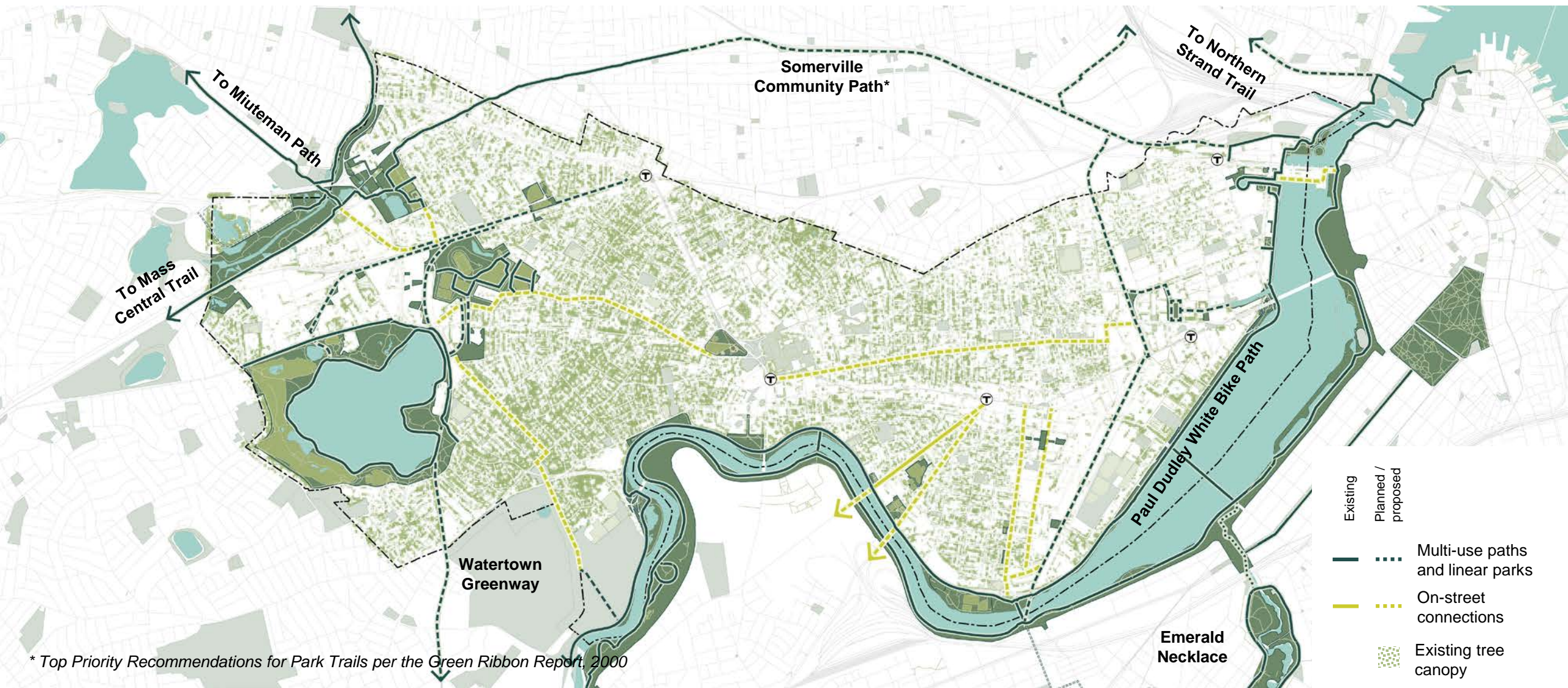
Cambridge's open space circuit – Links to neighborhoods, corridors



Cambridge's open space circuit – Links to neighborhoods, corridors

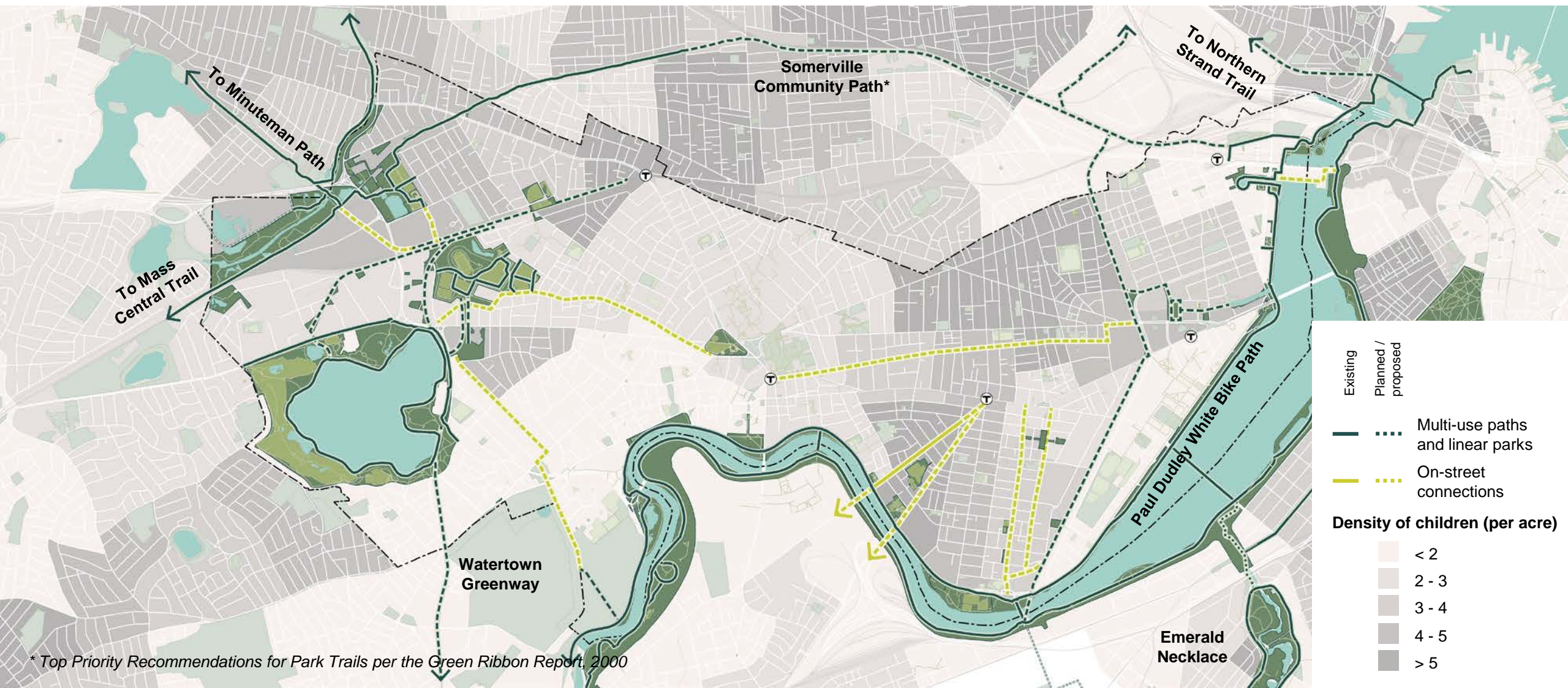


Cambridge's open space circuit – Pedestrian friendly routes

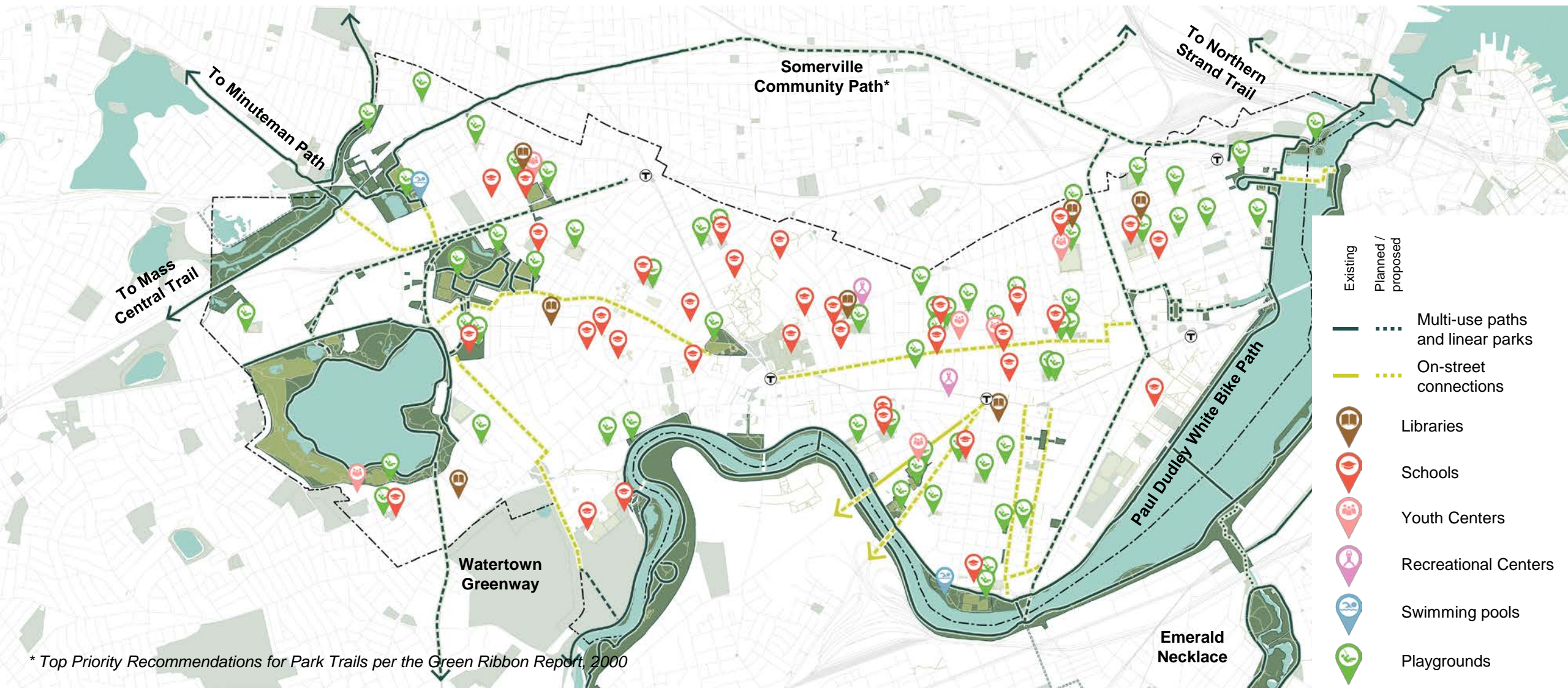


* Top Priority Recommendations for Park Trails per the Green Ribbon Report, 2000

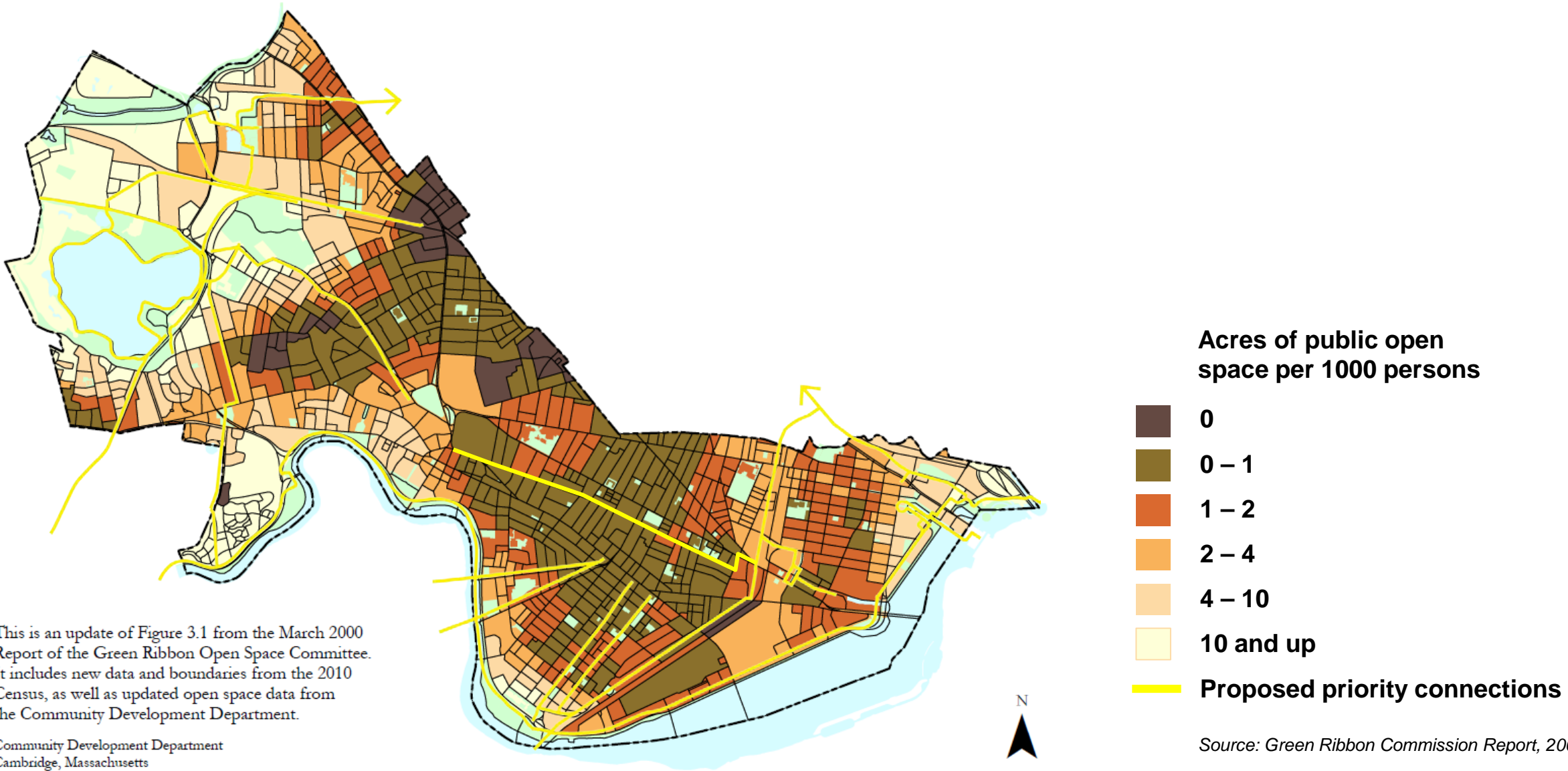
Connections to neighborhoods with a greater density of children



Safe routes to open space resources at schools



Expanding access to areas underserved by open space

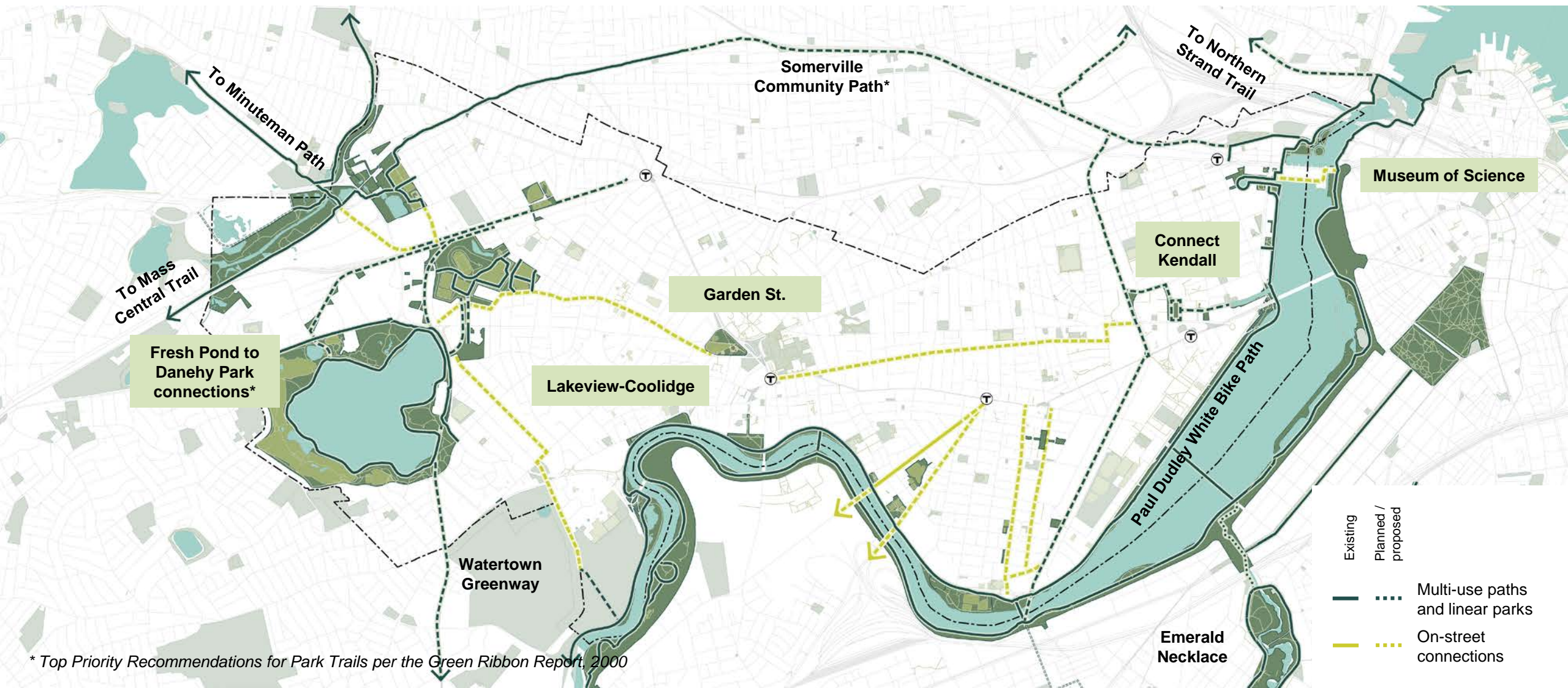


This is an update of Figure 3.1 from the March 2000 Report of the Green Ribbon Open Space Committee. It includes new data and boundaries from the 2010 Census, as well as updated open space data from the Community Development Department.

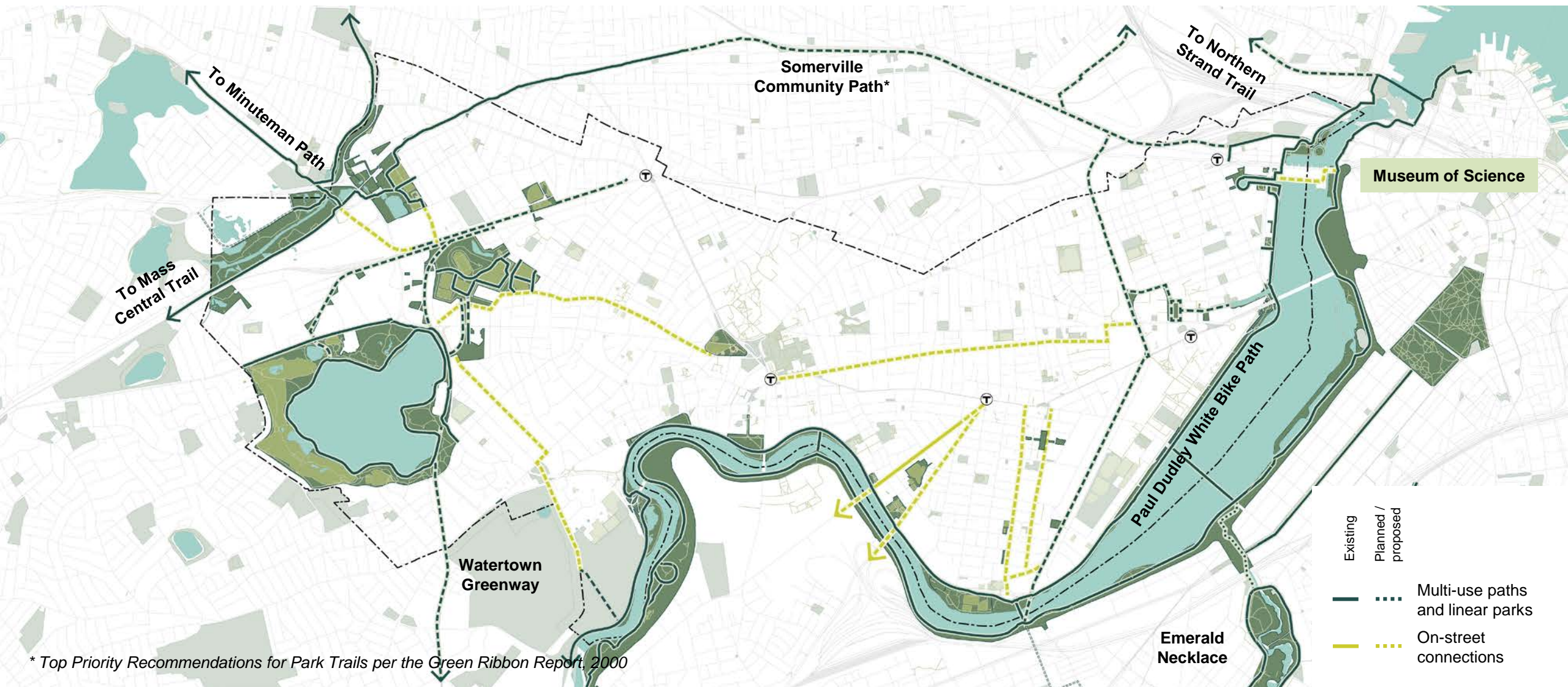
Community Development Department
Cambridge, Massachusetts

Source: Green Ribbon Commission Report, 2000.

Cambridge's open space circuit



Draft recommendation: Museum of Science connection



Draft recommendation: Museum of Science connection



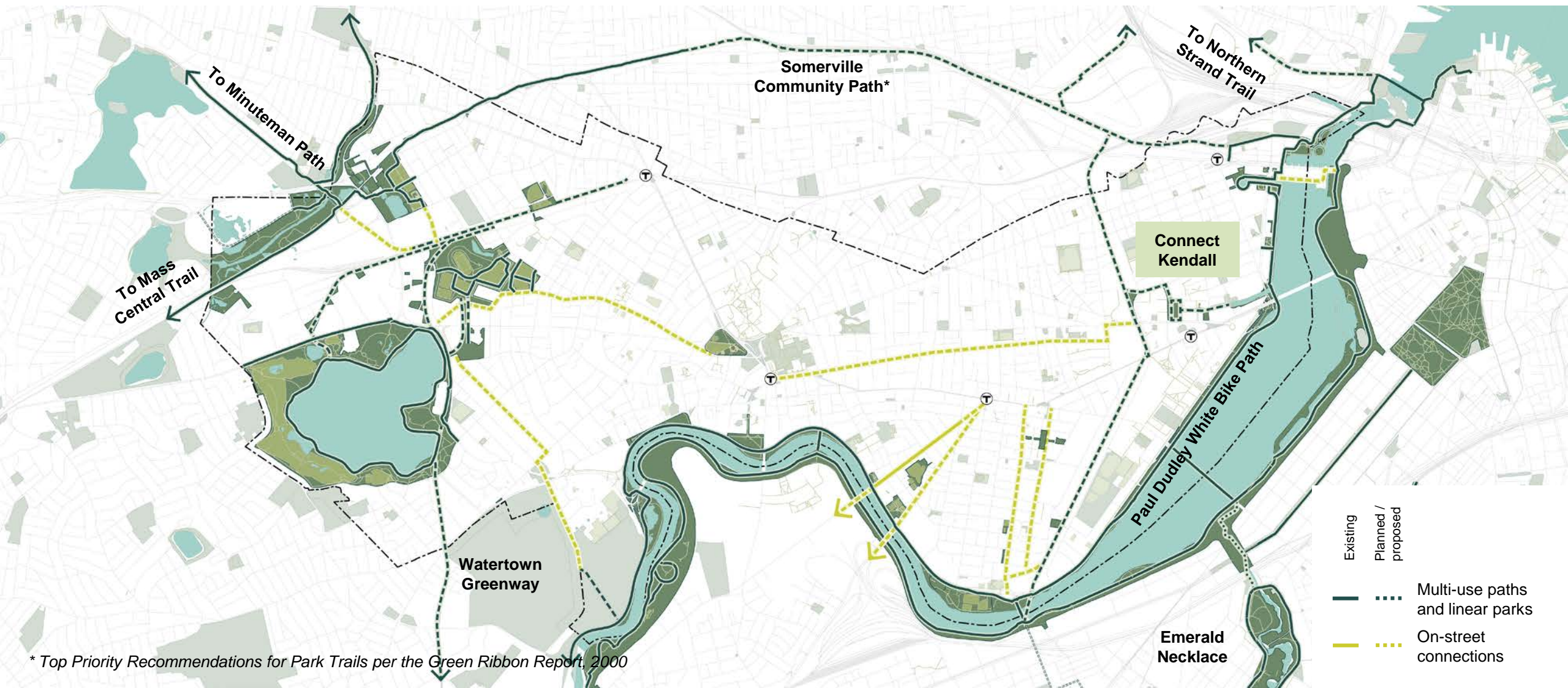
Charles River Dam and park, 1913



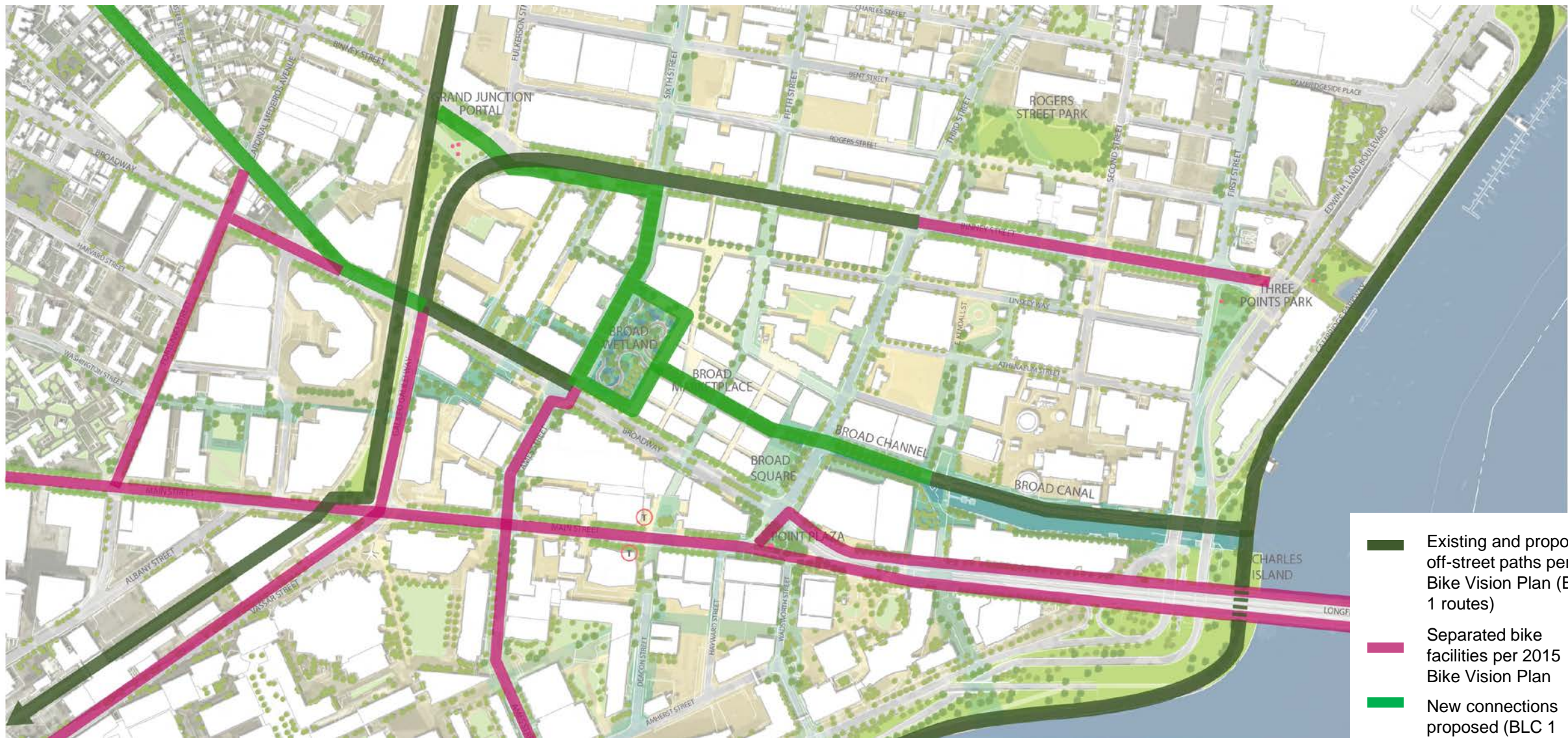
Pedestrian and Bicycle Connectivity Study, MassDOT and DCR, 2014



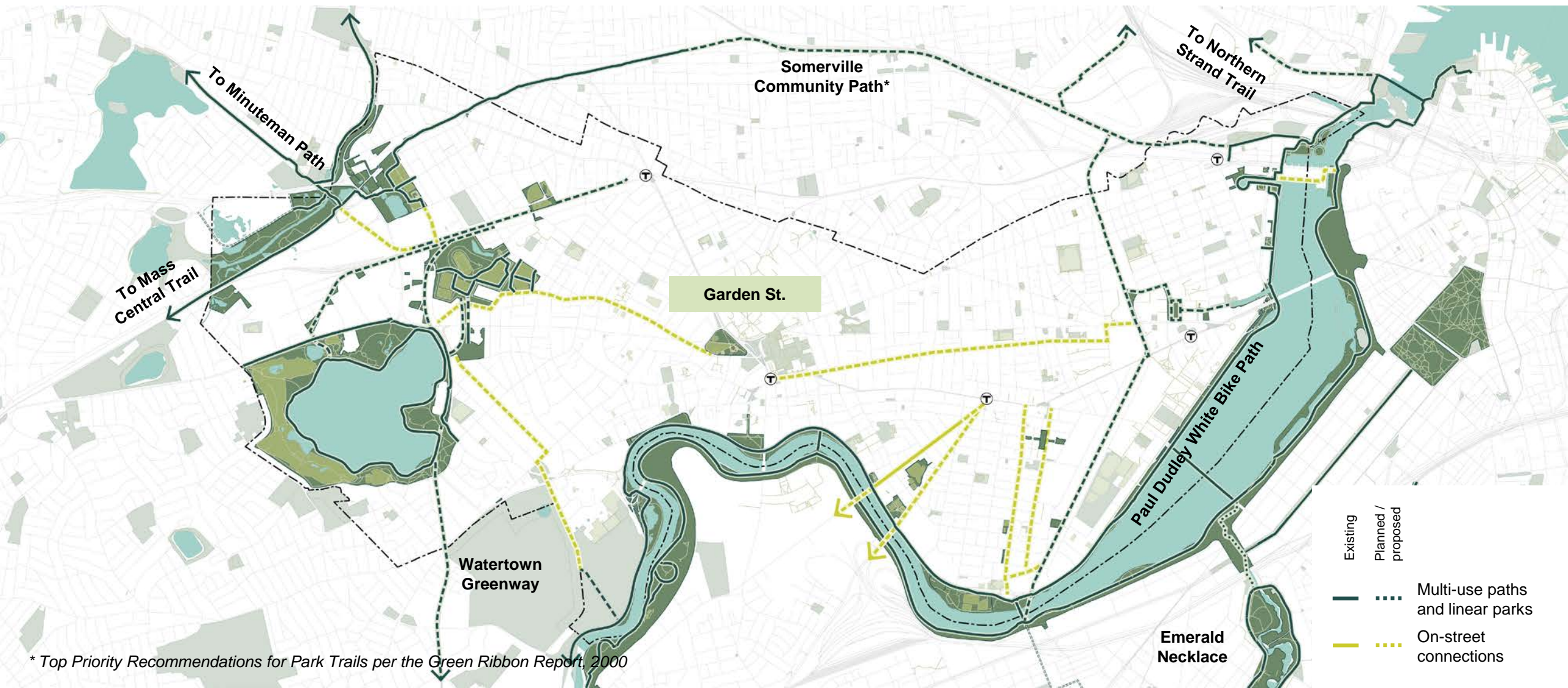
Draft recommendation: Connect Kendall



Connect Kendall plan detail



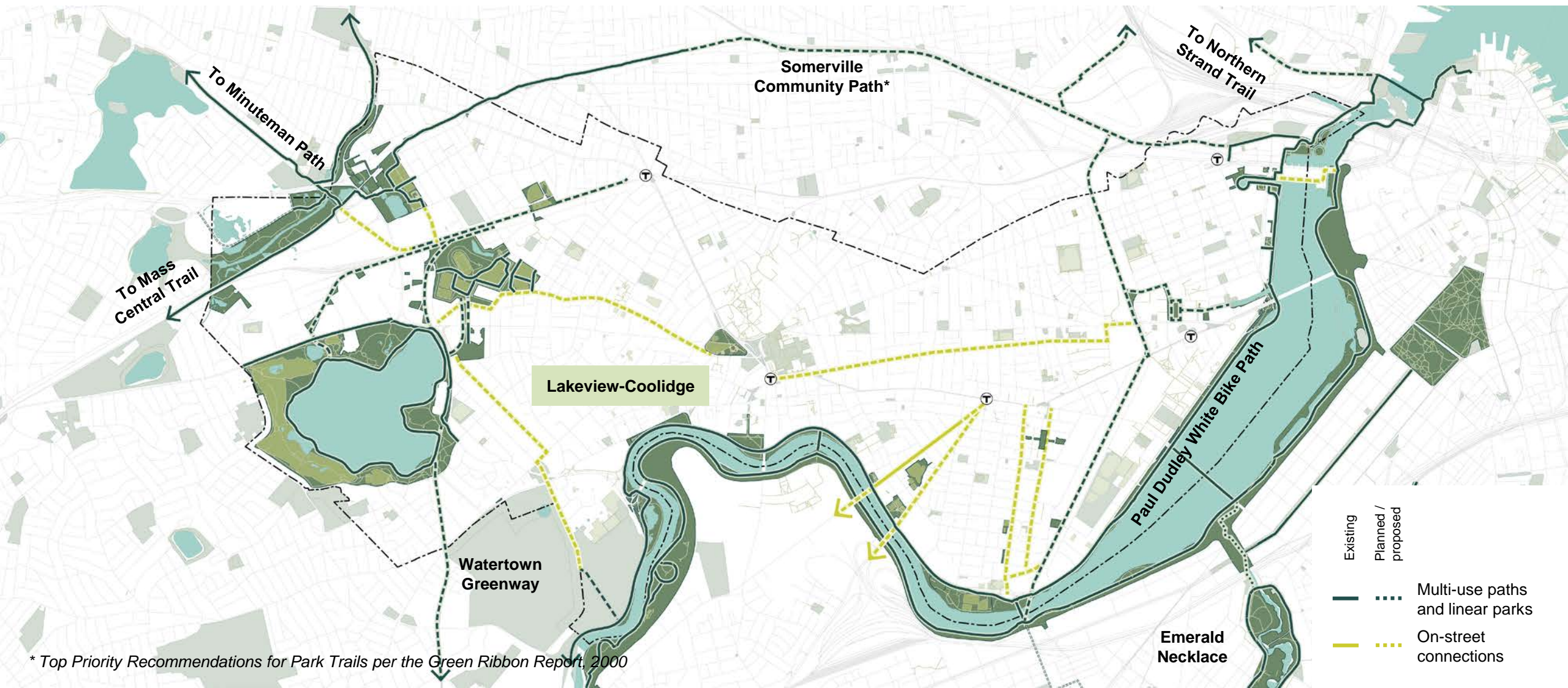
Draft recommendation: Garden Street



Draft recommendation: Garden Street



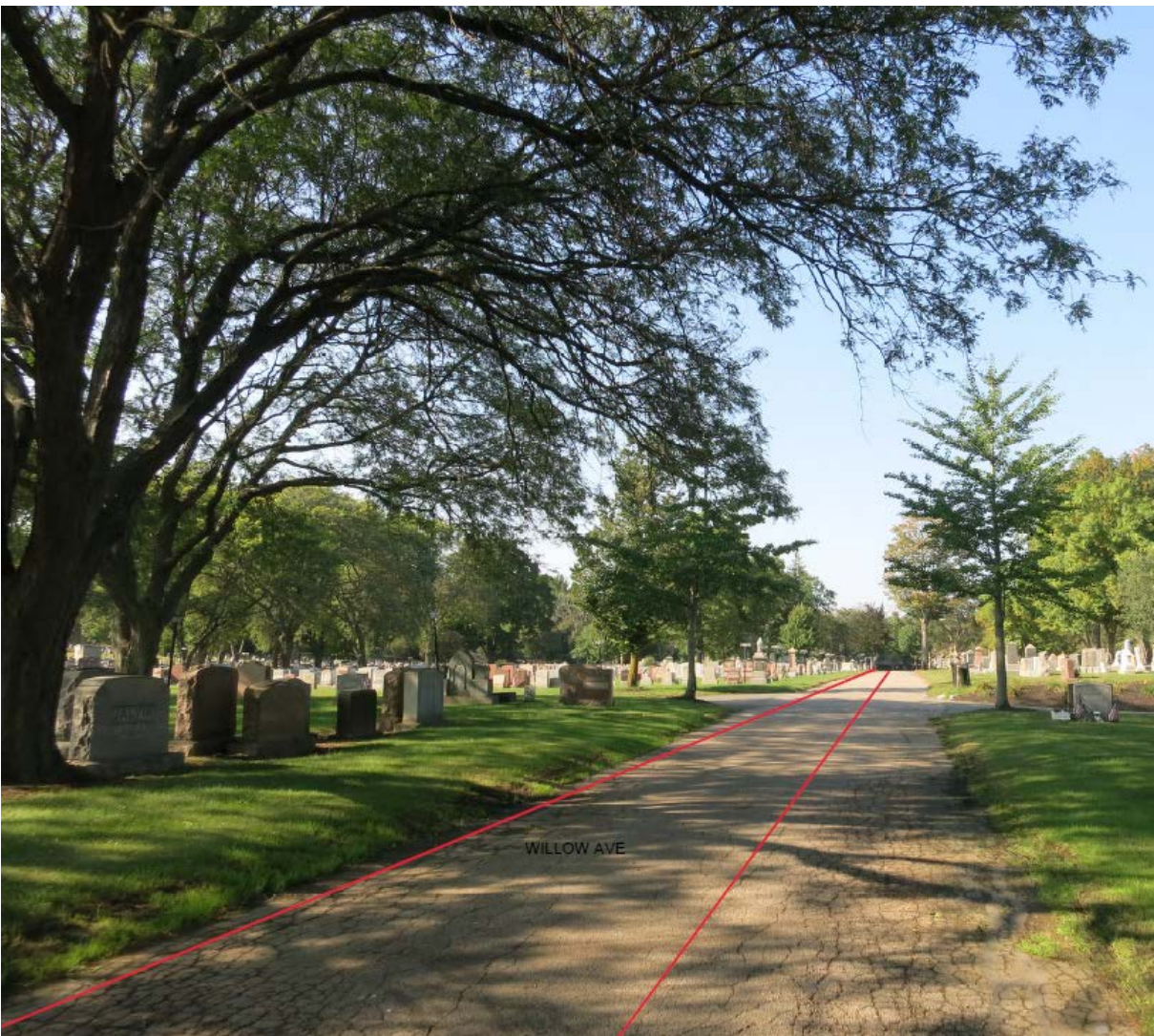
Draft recommendation: Lakeview Avenue-Coolidge Avenue



Draft recommendation: Lakeview Avenue



Draft recommendation: Coolidge Avenue, Willow Avenue



Precedent: Riverview Cemetery Paths, Portland OR



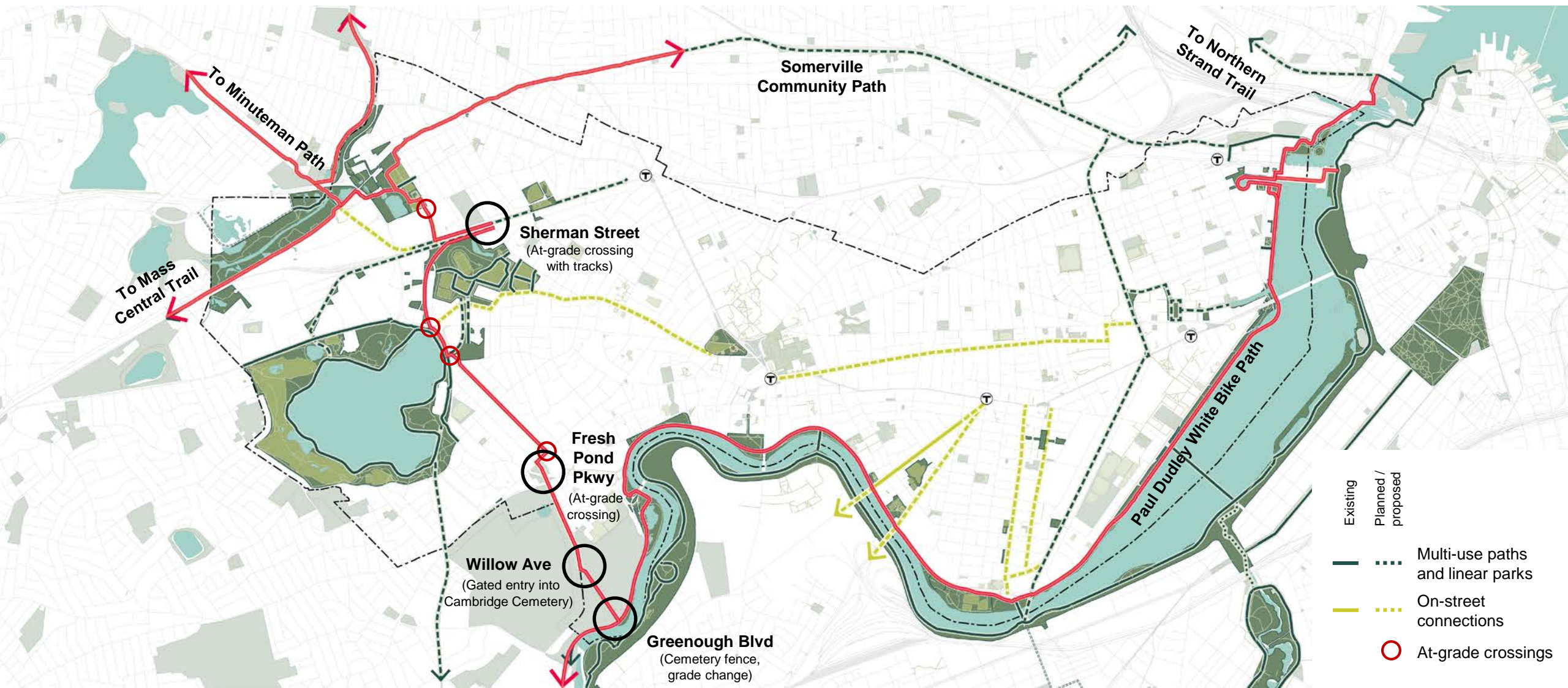
SOUTH WEST PORTLAND BICYCLE MAP

Bicycling

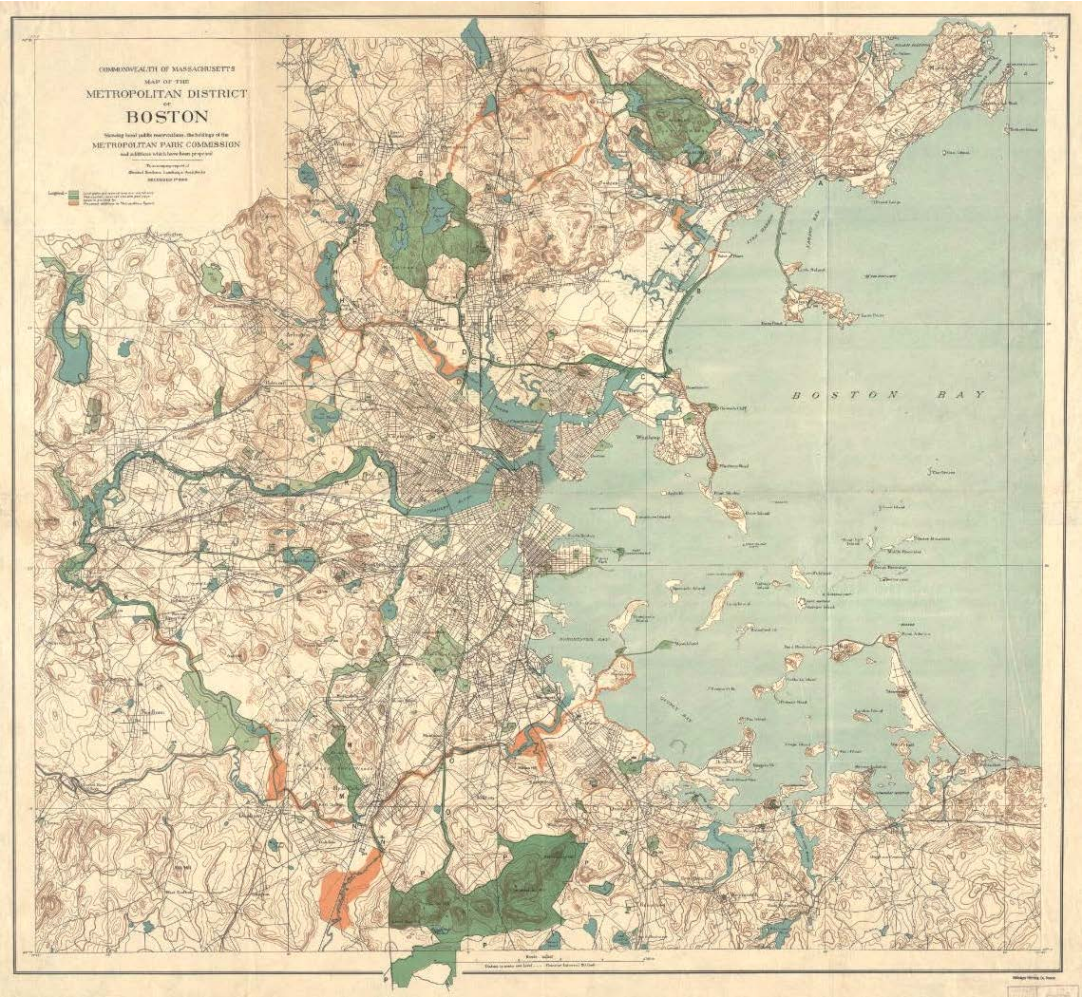
- Multi-use path** (no motor vehicles)
- Neighborhood Greenway/signed and marked route**
- Shared roadway** (lower traffic street – up to 3000 vehicles per day)
- Bike lane** (painted lane on higher traffic street)
- Shared roadway** (moderate traffic – between 3000 and 5000 vehicles per day)
- Shared roadway** (very high traffic – over 5000 vehicles per day)
- Wider outside lane or shoulder** (black lines)
- Major street**



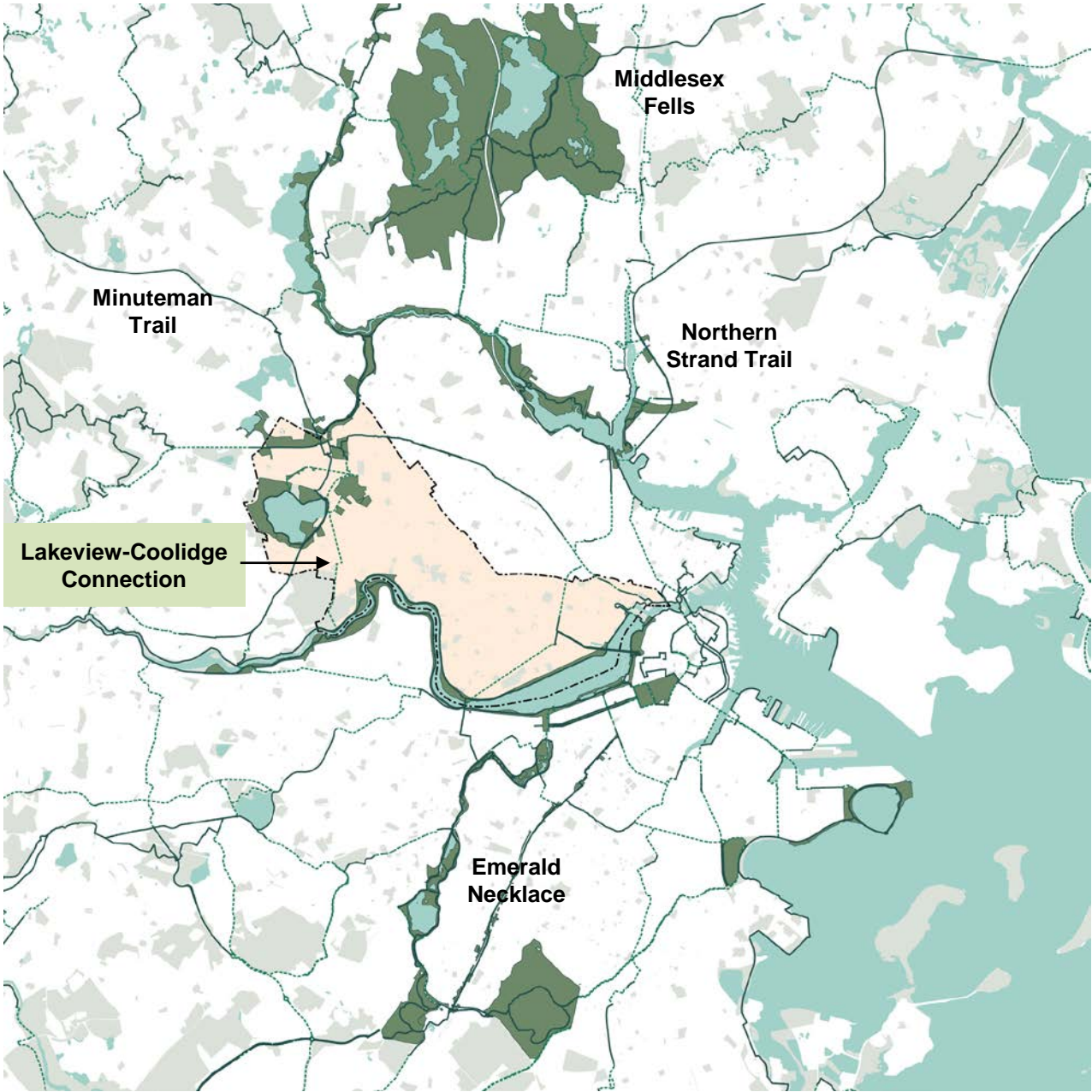
Gaps in the Lakeview Avenue-Coolidge Avenue Connection



Regional Open Space Network



Charles Eliot., *Metropolitan Park Reservations*, 1902



Discussion

- Which of these connections would you use to walk, jog, or bike to an open space?
- Which connections do you think are most important for completing Cambridge's open space circuit?
- Are there any connections that we missed?

