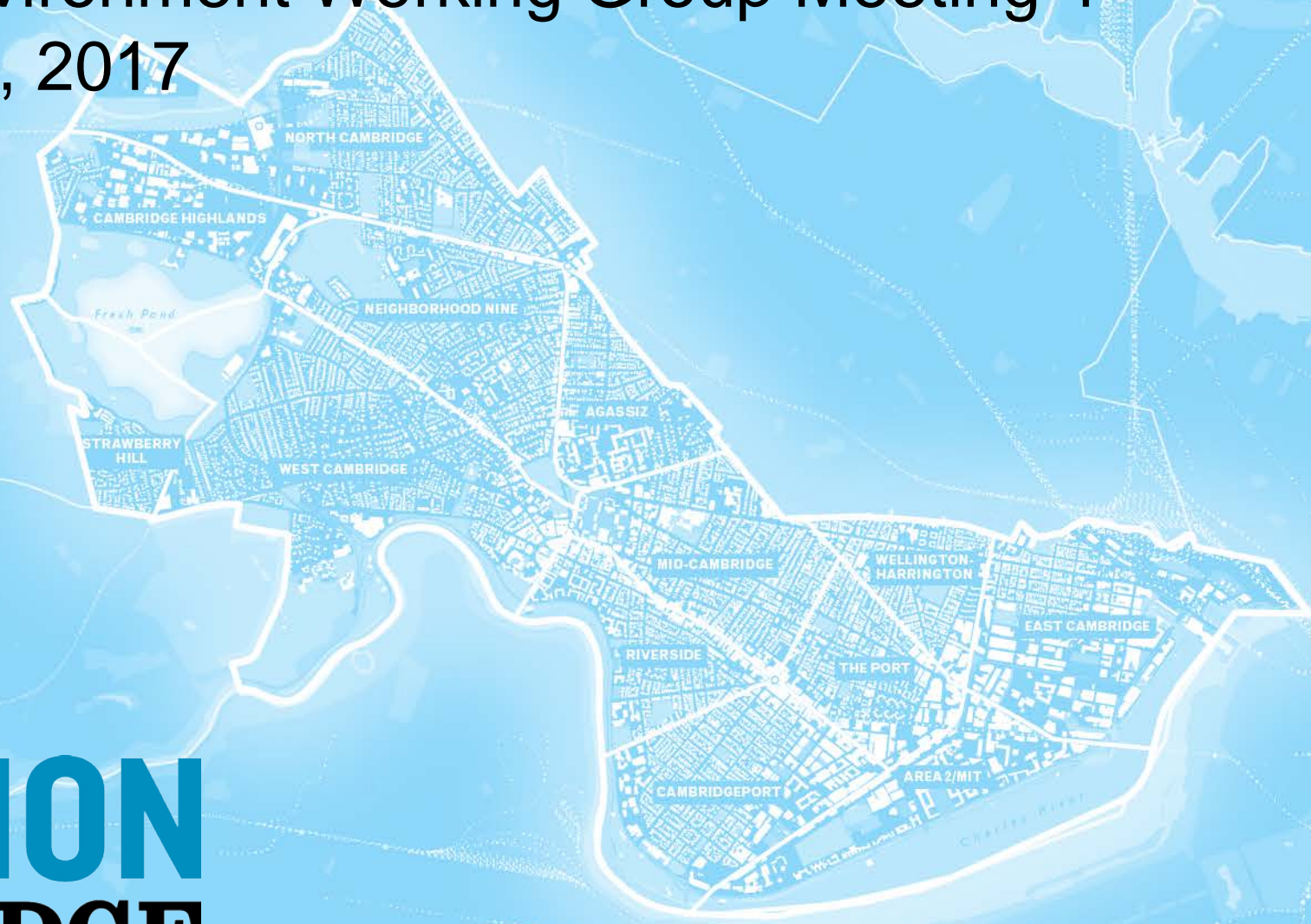


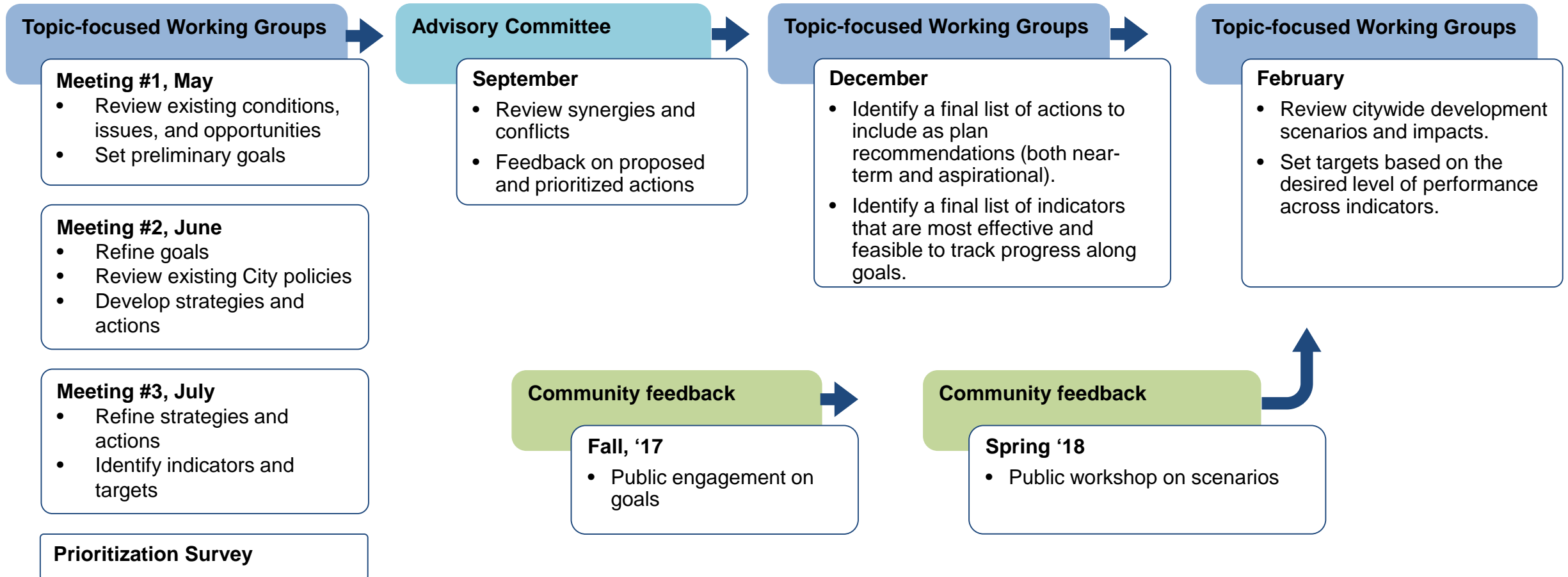
Climate & Environment Working Group Meeting 4

November 28, 2017



ENVISION CAMBRIDGE

Process update

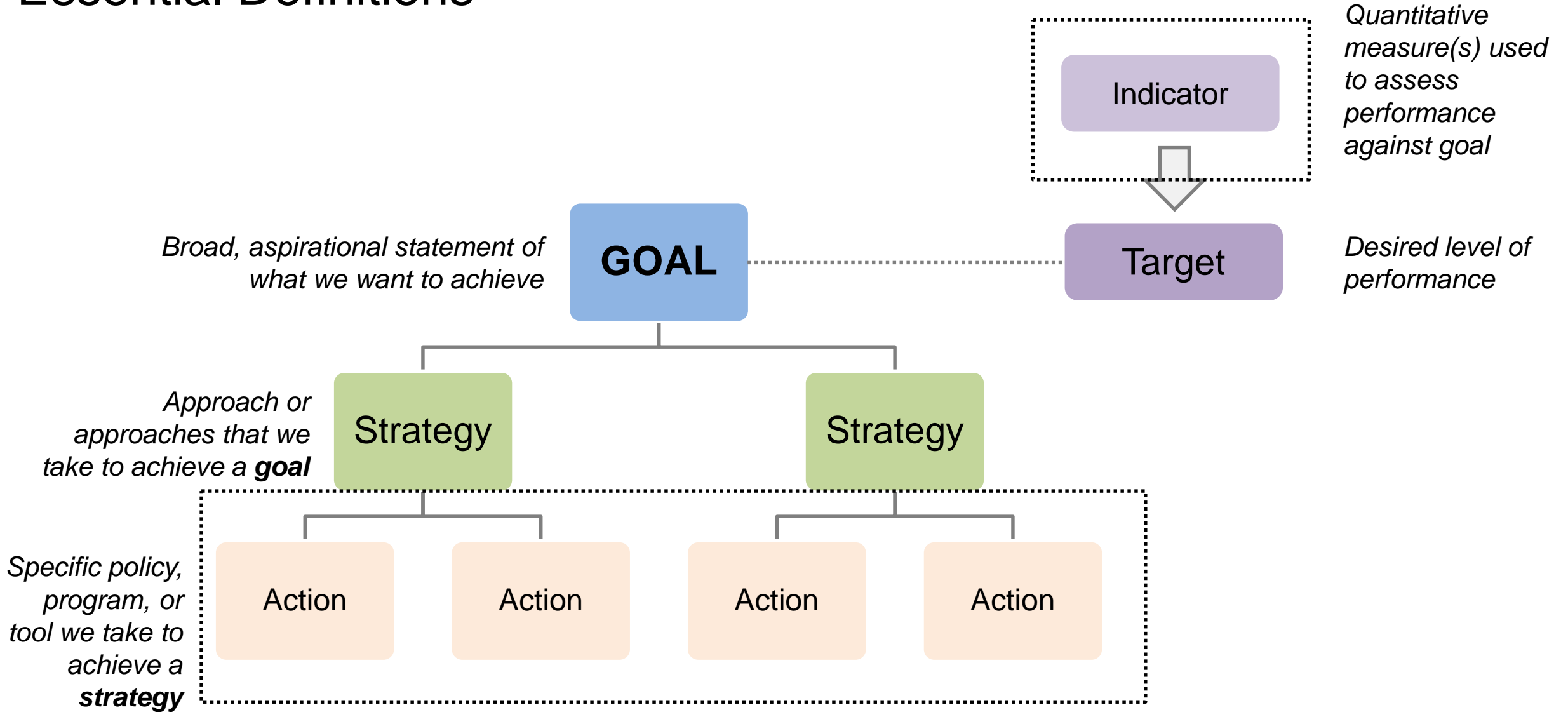


Today's agenda

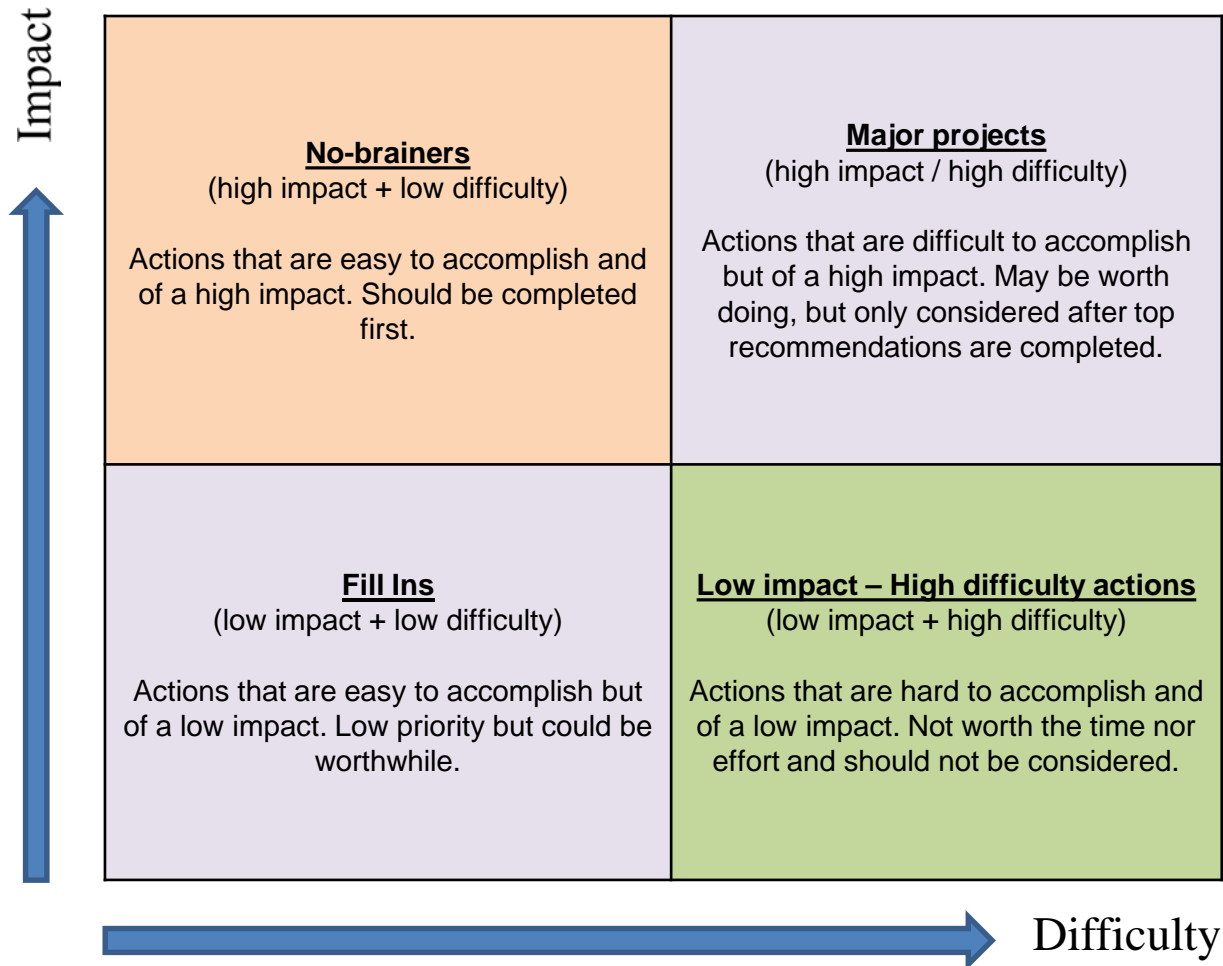
Meeting objective: Gain consensus on actions that will be written into the plan as recommendations, and select indicators that the City will measure on an ongoing basis after the plan has been released.

- **Session overview** **10 mins**
- **Actions:** Discuss Working Group feedback on the Priority Matrix developed by City and consultant teams. Identify a final list of actions to include as plan recommendations. **75 mins**
(Facilitated exercise)
- **Indicators:** Present indicators recommended by the planning team that are most effective and feasible to track progress along goals. Discuss indicators and identify a final list to be included in the plan. **45 mins**
- **Next steps** **10 mins**

Essential Definitions



Session overview: Determining plan priorities



Sorting: Working with the City, the actions generated at the end of meeting #3 have been sorted into 4 categories based on expected impact and difficulty.

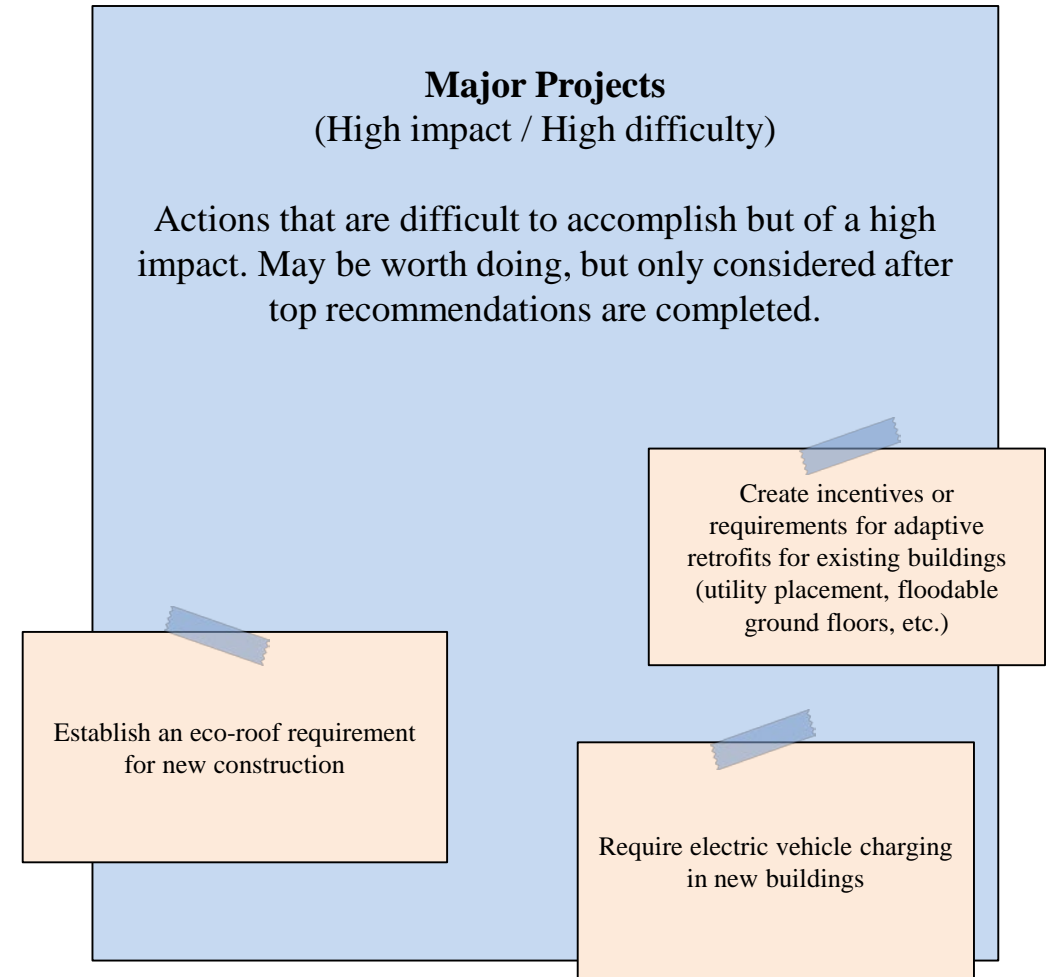
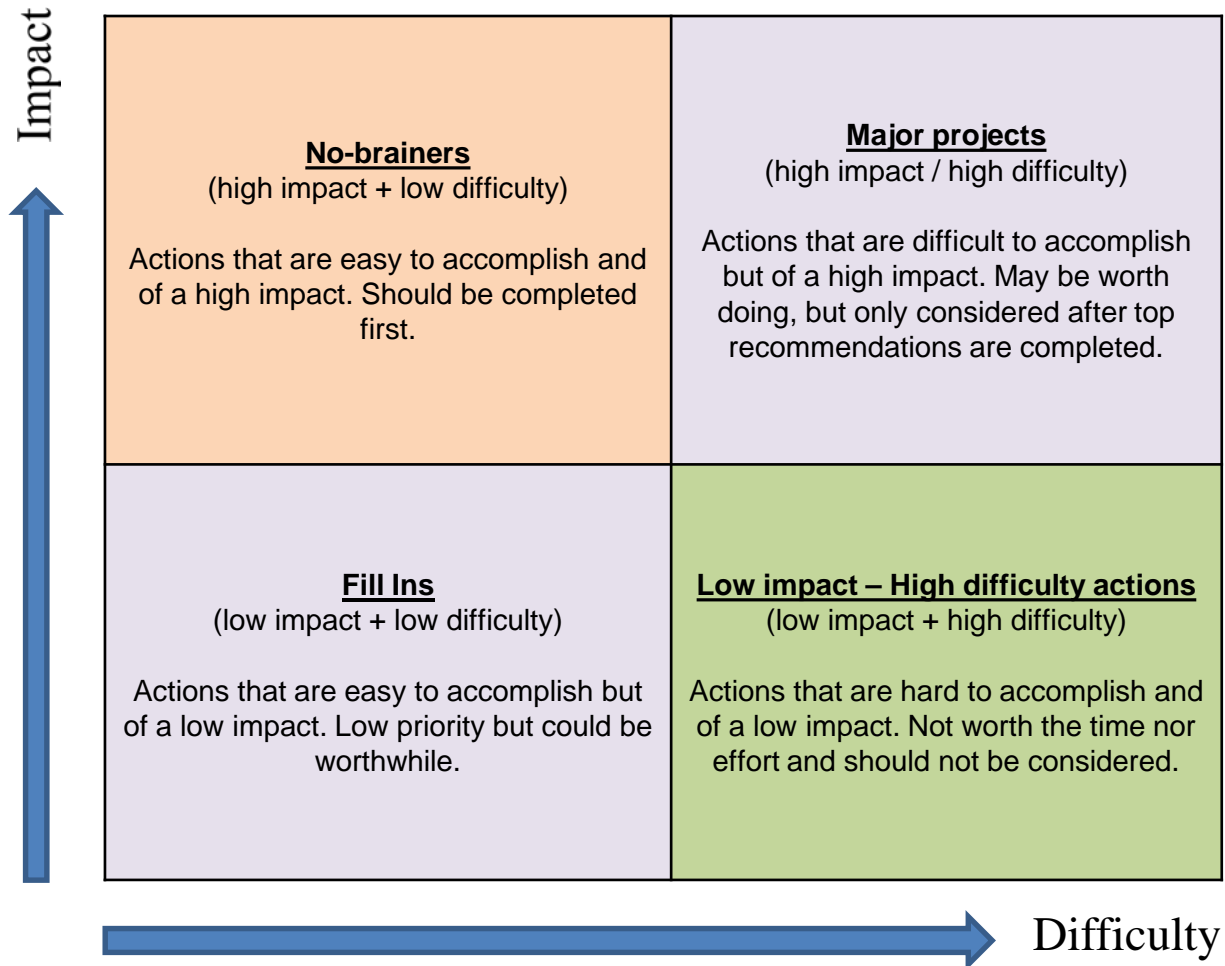
Streamlining: To bring the actions into a parallel style across all working groups, some of them have been rephrased or combined. We intended to make the actions more specific, and to sharpen them by replacing verbs such as “explore” or “encourage” with concrete actions that the City can pursue.

Facilitated Exercise



Action categorization

Do you agree with the current placement of each action along the four quadrants?



Indicators



Characteristics of a Good Indicator

An indicator is a quantitative measure used to assess performance against a goal. To guide the Working Group's development of indicators, the following general characteristics of good indicators have been identified.

Simple to understand and communicate

Indicators That Do Not Meet These Criteria

Citywide noise pollution (Lden)

Historic data is available and readily accessible

Native plantings as % of groundcover

Indicator is a true reflection of performance

Total number of parks

Recommended climate & environment indicators (1 of 2)

Which of these indicators seem most compelling in measuring progress against the goals?

Are there any other indicators that should be considered as a better way to measure progress against goal(s)?

Indicator	Goal assessed	Potential Source
Vulnerable populations at risk of displacement due to flooding (% of households)	A. Preparedness and Resilience	City of Cambridge Community Development Department
Heat-related hospitalizations (annual hospitalizations per 100,000 people)	A. Preparedness and Resilience	City of Cambridge Public Health Department
Climate change and sustainability curriculum taught in Cambridge Public Schools (hours of instruction)	B. Engagement and Benefits Sharing	Cambridge Public Schools
Tree canopy coverage (% by neighborhood)	C. Natural Environment	City of Cambridge Department of Public Works
Population living within walking distance of a park (%)	C. Natural Environment	City of Cambridge Department of Public Works

Recommended climate & environment indicators (2 of 2)

Which of these indicators seem most compelling in measuring progress against the goals?

Are there any other indicators that should be considered as a better way to measure progress against goal(s)?

Indicator	Goal assessed	Potential Source
Community-wide greenhouse gas emissions (mt CO₂e)	D. Carbon Neutrality	City of Cambridge Community Development Department
Potable water use (gallons/resident)	E. Sustainable Water Resources	Cambridge Water Department
Bacterial water quality report card for local water bodies (%)	E. Sustainable Water Resources	U.S. Environmental Protection Agency
Waste to landfill (tons)	F. Zero Waste	City of Cambridge Department of Public Works

Alternative climate & environment indicators

Which of these indicators seem most compelling in measuring progress against the goals?

Are there any other indicators that should be considered as a better way to measure progress against goal(s)?

Indicator	Goal assessed	Potential Source
Minority and low income household representation on citywide committees (%)	B. Engagement and Benefits Sharing	City of Cambridge Community Development Department
Air, noise, light and soil pollution (PM2.5, Lden, NSB, # of sites)	C. Natural Environment	Various
Separated Sewer System (%)	E. Sustainable Water Resources	City of Cambridge Department of Public Works
Drinking water quality (Index)	E. Sustainable Water Resources	Cambridge Water Department
Waste generation (tons)	F. Zero Waste	City of Cambridge Department of Public Works

Next steps



Upcoming citywide scenario analysis

- Envision Cambridge will be testing land use mixes and densities to determine the level of development under existing zoning compared to three alternative scenarios.
- The alternative scenarios will focus on the corridors and selected areas likely to have a higher propensity for change.
- The scenarios will be compared based on performance on citywide metrics such as:
 - Housing Units
 - Affordable Units
 - Jobs
 - Traffic volumes and mode share
 - GHG Emissions (MT CO₂e)
 - Net Revenue (\$)

Study areas for citywide scenarios

